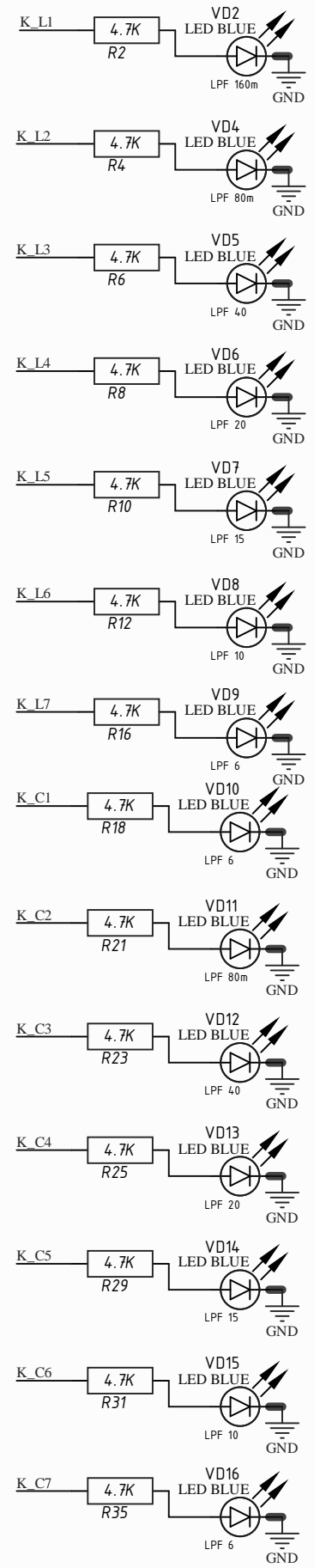
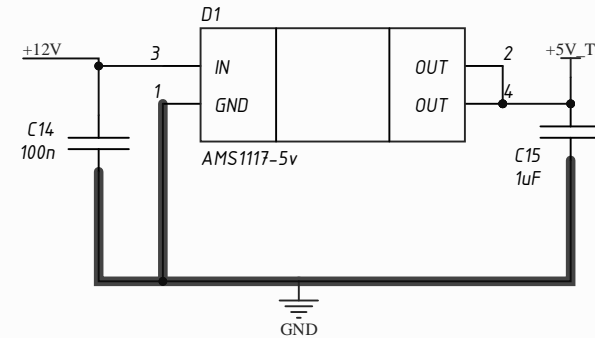
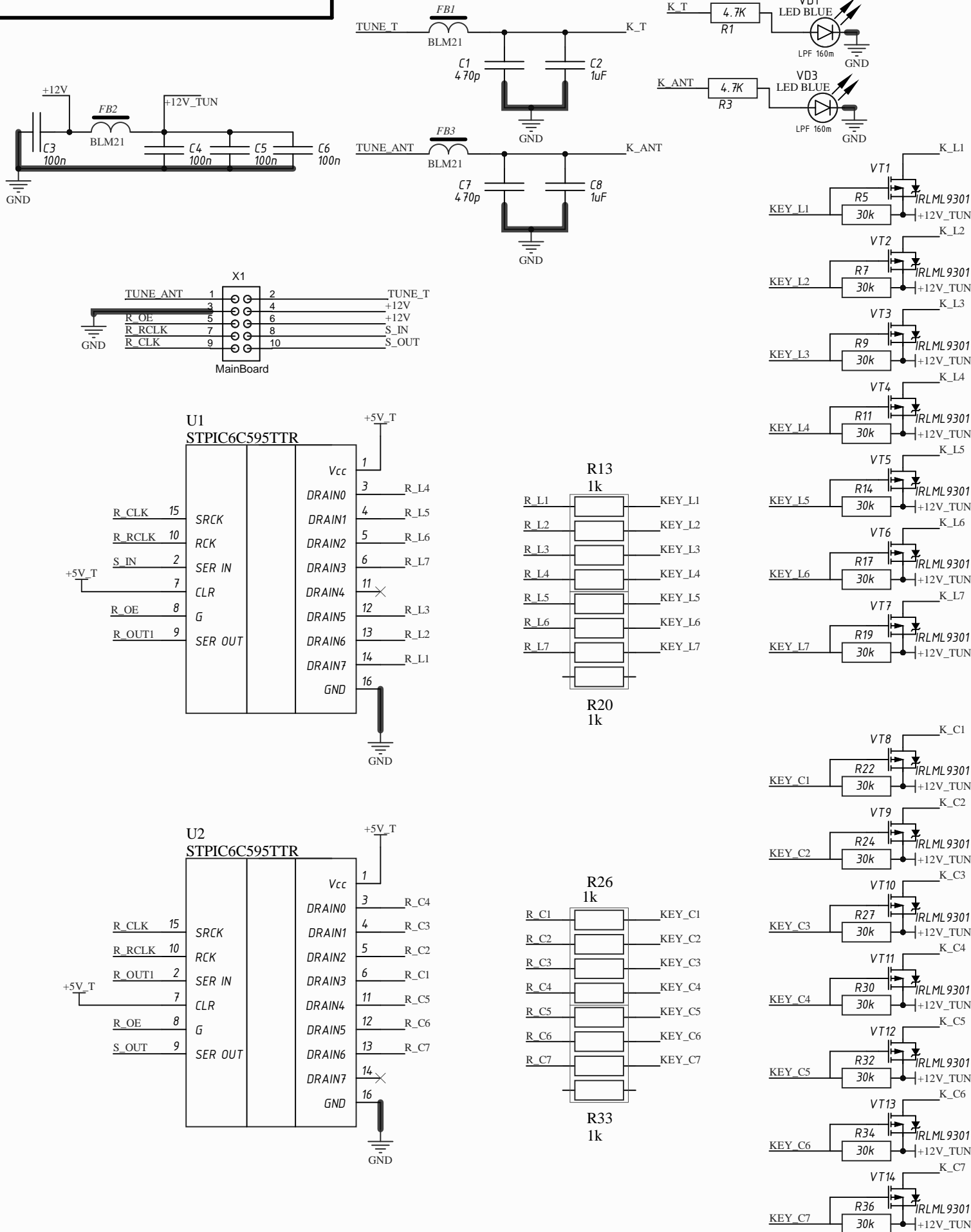
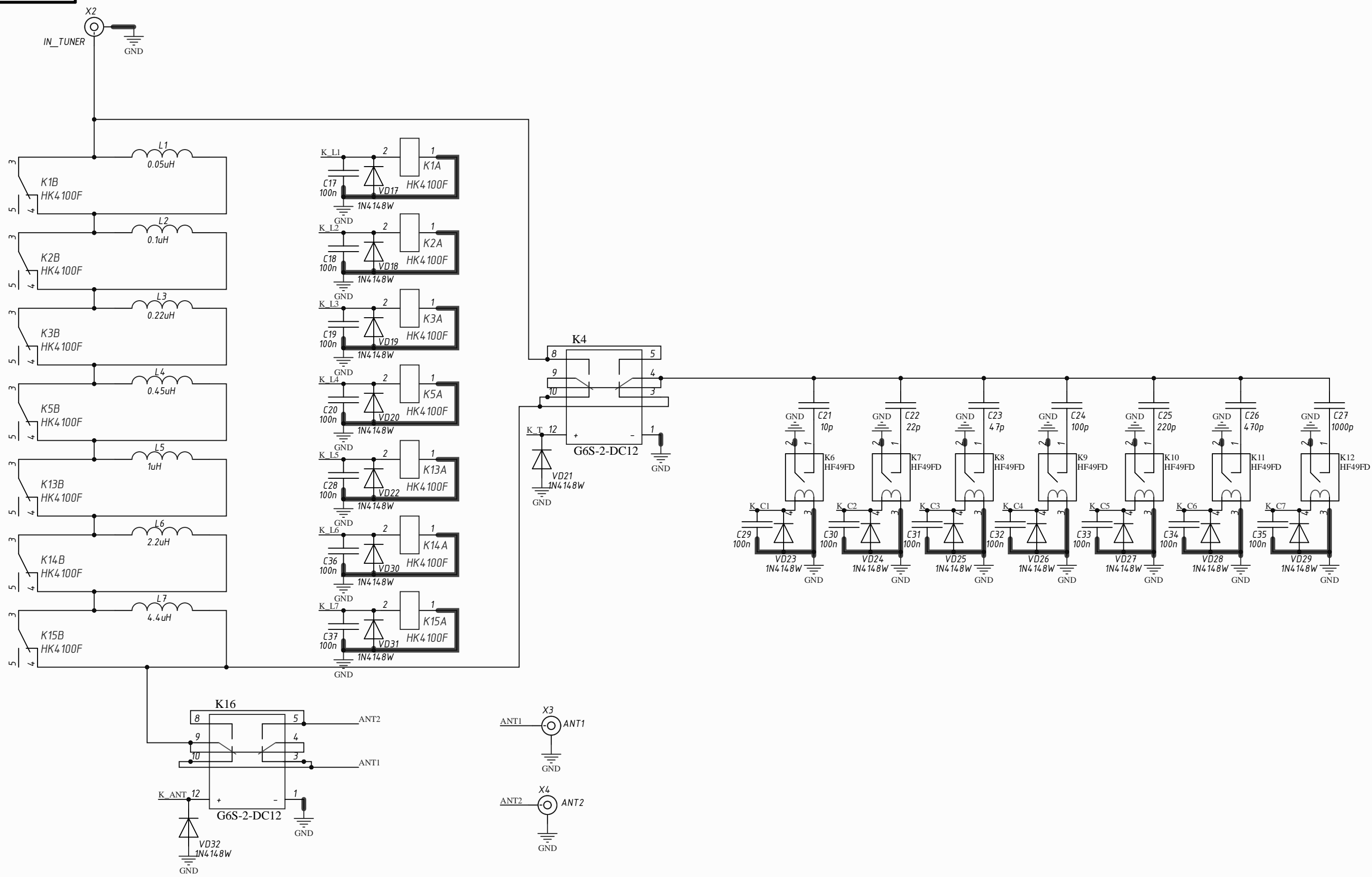
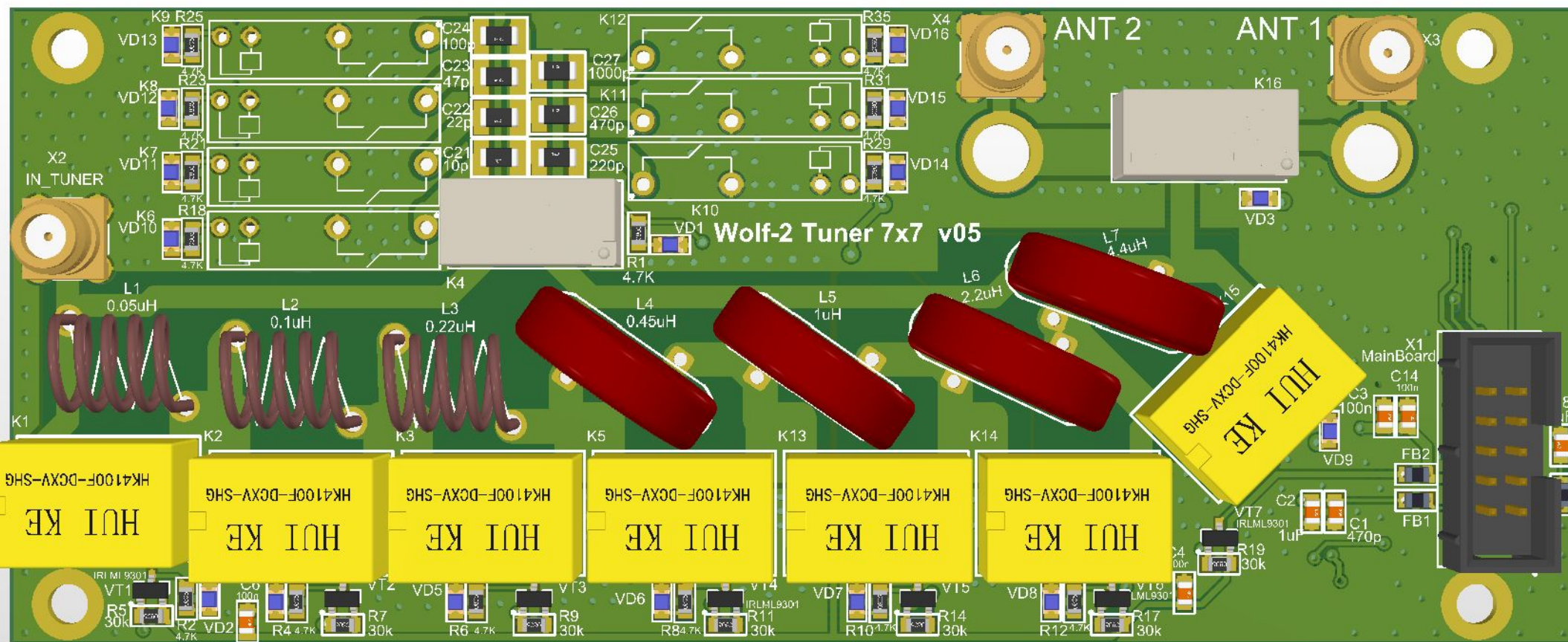


W2-Tuner_Control



Изм.	Лист	№ докум.	Подп.	Дата	W2-Tuner_Control	Лист
						1





Comment	Description	Designator	Footprint	LibRef	Quantity
470p		C1, C7	CH0805C	Capacitor	2
1uF		C2, C8, C15	CH0805C	Capacitor	3
100n		C3, C4, C5, C6, C14, C17, C18, C19, C20, C28, C29, C30, C31, C32, C33, C34, C35, C36, C37	CH0805C	Capacitor	19
10p		C21	CH1206ATC	Capacitor	1
22p		C22	CH1206ATC	Capacitor	1
47p		C23	CH1206ATC	Capacitor	1
100p		C24	CH1206ATC	Capacitor	1
220p		C25	CH1206ATC	Capacitor	1
470p		C26	CH1206ATC	Capacitor	1
1000p		C27	CH1206ATC	Capacitor	1
AMS1117-5v	LDO	D1	SOT223	NCP1117LPST50T3G	1
BLM21		FB1, FB2, FB3	CH0805L	FB-1	3
HK4100F		K1, K2, K3, K5, K13, K14, K15	NK4100F	NK4100F	7
G6S-2-DC12		K4, K16	G6S-2-DC12	G6S-2-12VDC	2
HF49FD		K6, K7, K8, K9, K10, K11, K12	HF49FD	HF49FD 012-1H12	7
0.05uH		L1	DR1	Inductor ring	1
0.1uH		L2	DR1	Inductor ring	1
0.22uH		L3	DR1	Inductor ring	1
0.45uH		L4	T68-0	Inductor ring	1
1uH		L5	T68-0	Inductor ring	1
2.2uH		L6	T68-0	Inductor ring	1
4.4uH		L7	T68-0	Inductor ring	1
4.7K		R1, R2, R3, R4, R6, R8, R10, R12, R16, R18, R21, R23, R25, R29, R31, R35	CH0805R	Resistor	16
30k		R5, R7, R9, R11, R14, R17, R19, R22, R24, R27, R30, R32, R34, R36	CH0805R	Resistor	14
1k		R13, R20, R26, R33	CAT16	CAT10-0804	4
STPIC6C595TTR		U1, U2	16-TSOP	STPIC6C595TTR	2
LED BLUE		VD1, VD2, VD3, VD4, VD5, VD6, VD7, VD8, VD9, VD10, VD11, VD12, VD13, VD14, VD15, VD16	LED: 0805B	LED_single	16
1N4148W		VD17, VD18, VD19, VD20, VD21, VD22, VD23, VD24, VD25, VD26, VD27, VD28, VD29, VD30, VD31, VD32	SOD123	Diod	16
IRLML9301	Mosfet	VT1, VT2, VT3, VT4, VT5, VT6, VT7, VT8, VT9, VT10, VT11, VT12, VT13, VT14	SOT23_132	IRLML9301	14
MainBoard	2*5 Pin	X1	CON: BH-10	IDC10	1
IN_TUNER	RF	X2	CON: SMA	SMA	1
ANT1	RF	X3	CON: SMA	SMA	1
ANT2	RF	X4	CON: SMA	SMA	1